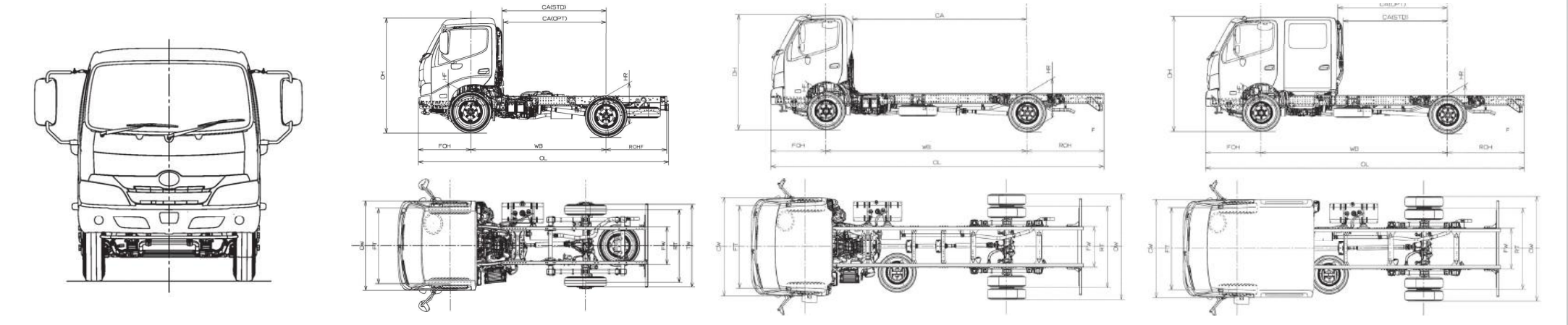


SPECIFICATION

MODEL		<i><b>XZU600</b></i>	<i><b>XZU640</b></i>	<i><b>XZU600AT</b></i>	<i><b>XZC710</b></i>	<i><b>XZC730</b></i>	<i><b>XZC740</b></i>	<i><b>XZC710AT</b></i>	<i><b>XZC730AT</b></i>	<i><b>XZC720CREW</b></i>
FULL MODEL CODE		XZU600R - WKMLK3	XZU640R - WKMLK3	XZU600R - WKTLLK3	XZC710R - WKFRL3	XZC730R - WKFRL3	XZC740R - WKFRL3	XZC710R - WKTRL3	XZC730R - WKTRL3	XZC720R - ZKFRL3
GVW (Kg)		5,000	5,000	5,000	7,500	7,500	7,500	7,500	7,500	7,500
DRIVE SYSTEM	CONFIGURATION	4 x 2	4 x 2	4 x 2	4 x 2	4 x 2	4 x 2	4 x 2	4 x 2	4 x 2
	NO. OF WHEEL	4 Wheeler	4 Wheeler	4 Wheeler	6 Wheeler	6 Wheeler	6 Wheeler	6 Wheeler	6 Wheeler	6 Wheeler
CAB STYLE		Standard Cab	Standard Cab	Standard Cab	Wide Cab	Wide Cab	Wide Cab	Wide Cab	Wide Cab	Crew Cab
STANDARD WHEELBASE (mm)		2525	3075	2525	3500	4100	4400	3500	4100	3800
ENGINE	MODEL	N04C - WG	N04C - WG	N04C - WG	N04C - WH	N04C - WH	N04C - WH	N04C - WH	N04C - WH	N04C - WH
	DISPLACEMENT (cc)	4,009	4,009	4,009	4,009	4,009	4,009	4,009	4,009	4,009
	EMISSION	Euro 3	Euro 3	Euro 3	Euro 3	Euro 3	Euro 3	Euro 3	Euro 3	Euro 3
	TYPE	Commonrail, Turbo Charged, Intercooled	Commonrail, Turbo Charged, Intercooled	Commonrail, Turbo Charged, Intercooled	Commonrail, Turbo Charged, Intercooled	Commonrail, Turbo Charged, Intercooled	Commonrail, Turbo Charged, Intercooled	Commonrail, Turbo Charged, Intercooled	Commonrail, Turbo Charged, Intercooled	Commonrail, Turbo Charged, Intercooled
	MAX OUTPUT (PS)	104 (141) / 2,500	104 (141) / 2,500	104 (141) / 2,500	115 (156) / 2,800	115 (156) / 2,800	115 (156) / 2,800	115 (156) / 2,800	115 (156) / 2,800	115 (156) / 2,800
	MAX TORQUE (Nm)	402 (41) / 1,600	402 (41) / 1,600	402 (41) / 1,600	430 (44) / 1,400	430 (44) / 1,400	430 (44) / 1,400	430 (44) / 1,400	430 (44) / 1,400	430 (44) / 1,400
TRANSMISSION / MODEL		Manual 5-Speed / RE50	Manual 5-Speed / RE50	Automatic 6-Speed / A860E	Manual 6-Speed / RE61	Manual 6-Speed / RE61	Manual 6-Speed / RE61	Automatic 6-Speed / A860E	Automatic 6-Speed / A860E	Manual 6-Speed / RE61
SERVICE BRAKES		Vacuum Servo Hydraulic	Vacuum Servo Hydraulic	Vacuum Servo Hydraulic	Vacuum Servo Hydraulic	Vacuum Servo Hydraulic	Vacuum Servo Hydraulic	Vacuum Servo Hydraulic	Vacuum Servo Hydraulic	Vacuum Servo Hydraulic
REAR AXLE MODEL		BD26A	BD26A	BD26A	SH12-1	SH12-1	SH12-1	SH12-1	SH12-1	SH12-1





**HINO MOTORS SALES (MALAYSIA) SDN BHD (187863-U)**

**Selangor:** Lot PT 24, Jalan 223, Section 51A, 46100 Petaling Jaya, Selangor Darul Ehsan, Malaysia. **Tel:** (603) 7957 5199 (12 lines) **Fax:** (603) 7954 3276

**Sarawak:** Lot 1076, Block 218, 4th Mile, Penrissen Road, 93250 Kuching, Sarawak, Malaysia. **Tel:** (082) 451 611 (5 lines) **Fax:** (082) 451 993

**Sabah:** Miles 4 1/2 Jalan Tuaran, Lot No. 353, Taman Cempaka, Likas, 88450 Kota Kinabalu, Sabah, Malaysia. **Tel:** (088) 393 663 **Fax:** (088) 424 223

**www.hino.com.my**

HINO Authorized Dealer:



Terms and Conditions apply\*



# HINO 300

Series **PRO**

Strong, Spacious, Safety, Smart  
*Built for Ultimate Customer Success*





# STRONG

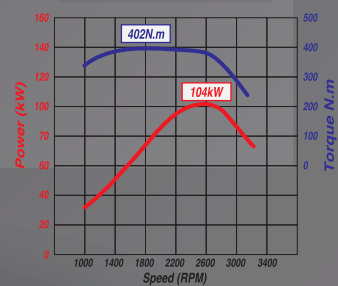
▼ **HORSEPOWER & TORQUE**  
High horsepower and torque engines that offers powerful drive for all application and road condition



**EURO 3 ENGINE**



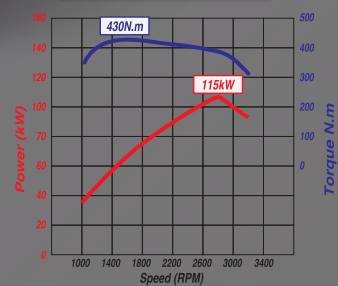
## 4 WHEELER



**MAX OUTPUT (PS / rpm)**  
141 PS / 2,500 rpm

**MAX TORQUE (Nm/rpm)**  
402 N.m / 1,600 rpm

## 6 WHEELER



**MAX OUTPUT (PS / rpm)**  
156 PS / 2,800 rpm

**MAX TORQUE (Nm/rpm)**  
430 N.m / 1,400 rpm

▼ **TRANSMISSION**  
Comes with manual and fully automatic transmission that best-fit to customer business field



### MANUAL TRANSMISSION ▶

4-wheeler comes with 5-speed manual transmission, 6-wheeler with 6-speed manual transmission for smooth acceleration from stationary position



### 6-SPEED AUTOMATIC TRANSMISSION

This system is designed for smooth automatic gear changes and superior fuel efficiency that gives easier and comfortable driving

# SPACIOUS

## 4 WHEELER



### ▲ GVW UP TO 5 TONNE

The highest Gross Vehicle Weight (GVW) in its category up to 5 tonne (5,000 kg)

## 6 WHEELER

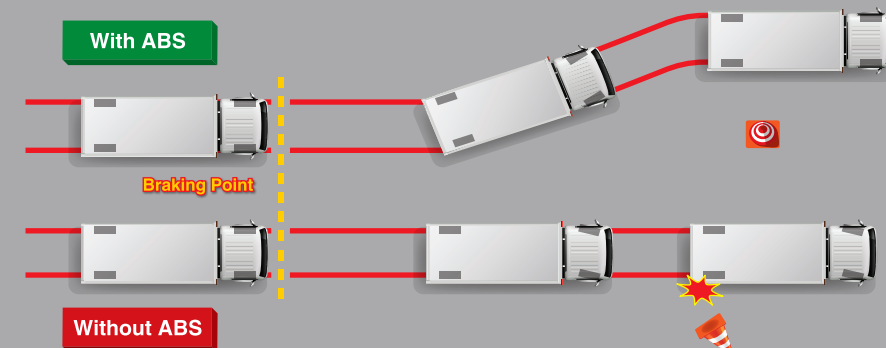


### ▲ BIGGEST BODY IN ITS CLASS

Widest rear tread in its category that is convenient to fit two wooden pallets side by side

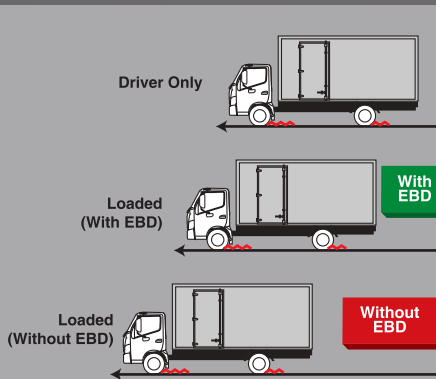
Note : Measurement various from body

# SAFETY



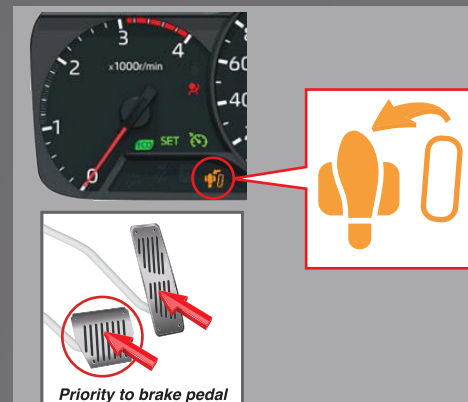
### ▲ ANTILOCK BRAKING SYSTEM (ABS)

An active safety feature designed to help driver retain steering control by preventing wheels from locking up during emergency braking



### ▲ ELECTRONIC BRAKEFORCE DISTRIBUTION (EBD)

Optimizes brake force depending on the load to ensure optimal braking system



### ▲ BRAKE OVERRIDE SYSTEM (BOS)

As a failsafe measure when acceleration and brake pedal are being pressed at the same time, priority will be given to braking



### ◀ THEFT MONITORING & SOS CALL

Monitor against break-in scenarios for your vehicle with 24-hour call center support and provide highly accurate location information that improves asset visibility

# SMART

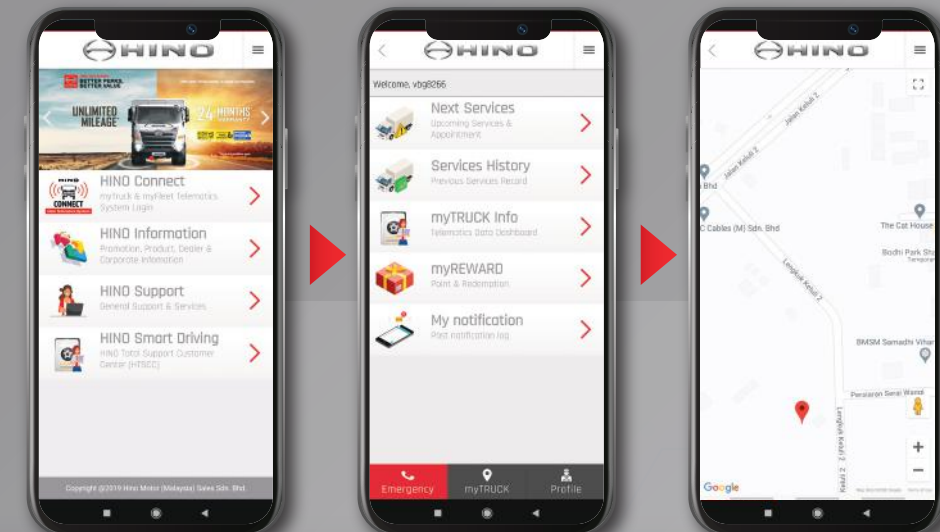


### Security & data tracking system that provides:

- Fuel consumption data
- Fuel economy guide
- GPS for tracking/ tracing vehicle location
- Driving Behaviour

### ▲ HINO CONNECT SYSTEM

Supports logistics operation in improving operational efficiency in terms of increase of profit, improve safety and security, encourage good driving behaviour, reduce unplanned downtime, and monitor truck maintenance by understanding the key elements of vehicle



### ▲ myHINO MOBILE APP

A specialized mobile application designed to link with HINO CONNECT System that allows user to track and monitor their vehicle in operation at one's fingertips

Note : Some images may be used for illustration purposes only.